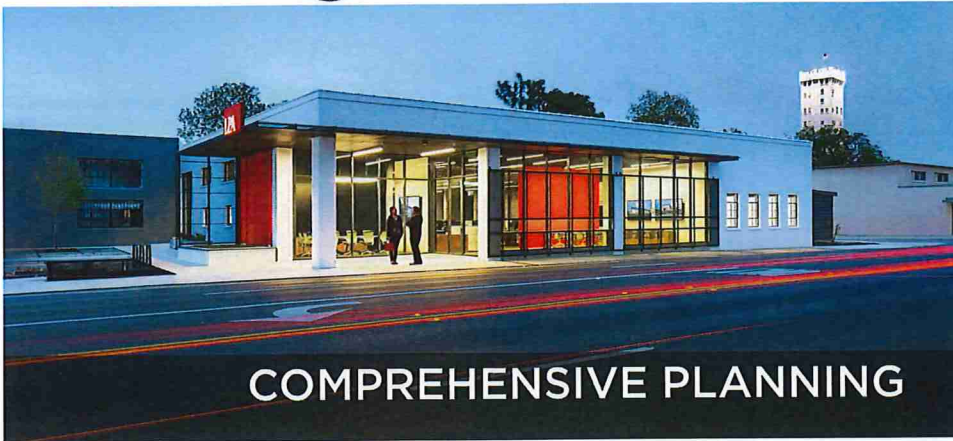


# CREATE CASTLE HILLS

## DETERMINING OUR FUTURE EXCELLENCE

A COMPREHENSIVE PLAN FOR THE CITY OF CASTLE HILLS

LPA



### COMPREHENSIVE PLANNING



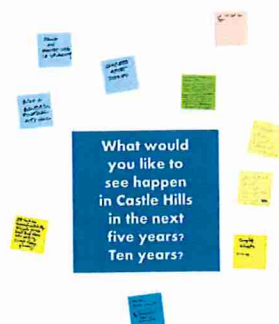
### COMPREHENSIVE PLANNING: WHAT IS IT? WHY DO WE DO IT? HOW IS IT ACHIEVED?



### Your voice Your future

A successful comprehensive plan reflects the voice of its city's residents and is the guiding document for shaping what the city will become.

#### MAP #1: NEIGHBORHOOD





# CREATE CASTLE HILLS

## DETERMINING OUR FUTURE EXCELLENCE

A COMPREHENSIVE PLAN FOR THE CITY OF CASTLE HILLS



### City of Castle Hills

The City of Castle Hills is a small community of 2.5 miles, incorporated in 1951. The city is located within metropolitan San Antonio, Texas.



### CITY CENTER



- A city center that offers multiuse of services for the residents of Castle Hills.
- A city center that offers openness, flexibility and is community focused.
- A city center that promotes wellness and physical activity for their residents.
- A city center that brings the community together while incorporating other public functions.
- A city center that serves as a node for multimodal transportation

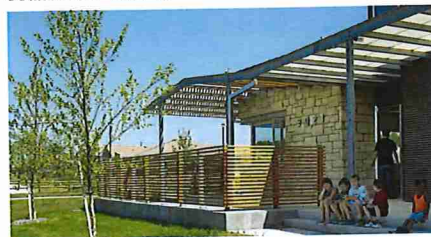


### CITY CENTER



A city center with the goal of improving services to citizens and introducing transparency into the workings of government.

### COMMUNITY CENTER



Residents can benefit from multi-use facility with flexible gathering spaces that provide the community with an inviting hub to connect with each other and to interact with the outdoors.

### CITY COMMONS



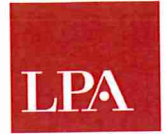
A revitalized city commons that serves as a community space where residents can develop a new kind of extended-family living based on mutual aid among neighbors and support.



# CREATE CASTLE HILLS

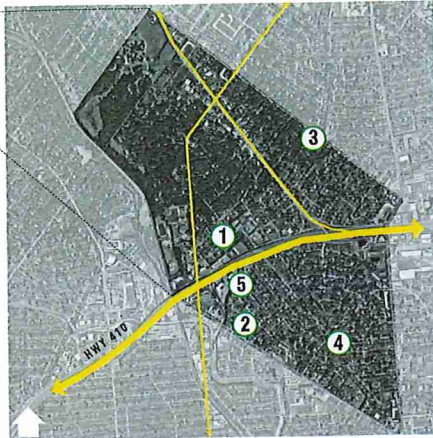
## DETERMINING OUR FUTURE EXCELLENCE

A COMPREHENSIVE PLAN FOR THE CITY OF CASTLE HILLS



### City of Castle Hills

The City of Castle Hills is a small community of 2.5 miles, incorporated in 1951. The city is located within metropolitan San Antonio, Texas.



## GREEN INFRASTRUCTURE

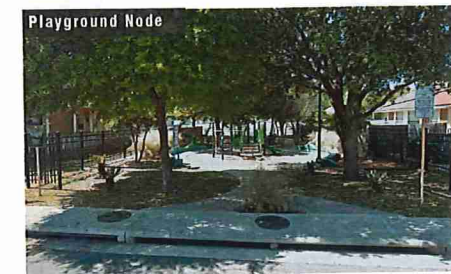
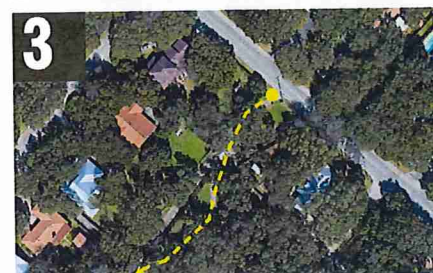
- ① Roundup Dr / Adobe Dr
- ② Gladiola Ln / Jackson Keller Rd
- ③ Lockhill Selma Rd / Iron Oak Ln
- ④ Buckaroo Dr / Antler Dr
- ⑤ Creek Section at I-410 Access Rd

- During the Engagement Sessions, residents identified the Honeysuckle underpass as a viable connector between the northern and southern neighborhoods.

- New connector at Honeysuckle should combine pedestrian and bikable infrastructure.

- New connector at Honeysuckle should connect pedestrian and bikable infrastructure with major corridors and public transportation and community nodes

- New connector should include plenty of streetlights and traffic safety for motorists, pedestrians and cyclists.





# CREATE CASTLE HILLS

## DETERMINING OUR FUTURE EXCELLENCE

A COMPREHENSIVE PLAN FOR THE CITY OF CASTLE HILLS

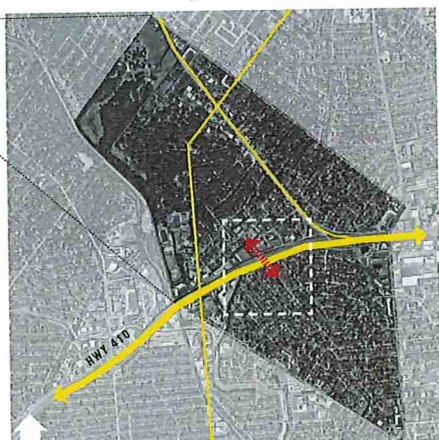


Honeysuckle underpass re-imagined

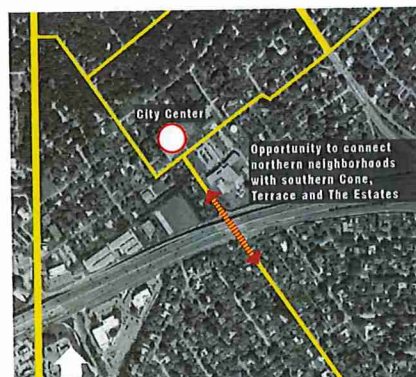


### City of Castle Hills

The City of Castle Hills is a small community of 2.5 miles, incorporated in 1951. The city is located within metropolitan San Antonio, Texas.



## NEIGHBORHOOD CONNECTION

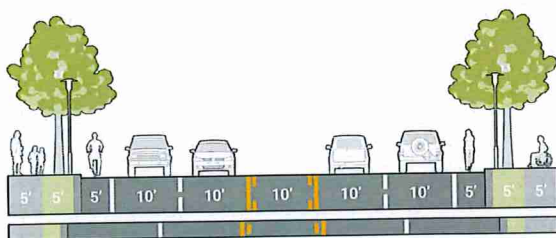


- During the Engagement Sessions, residents identified the Honeysuckle underpass as a viable connector between the northern and southern neighborhoods.

- New connector at Honeysuckle should combine pedestrian and bikable infrastructure.

- New connector at Honeysuckle should connect pedestrian and bikable infrastructure with major corridors and public transportation and community nodes

- New connector should include plenty of streetlights and traffic safety for motorists, pedestrians and cyclists.



### Key Features of Underpass Revitalization

- 1 Secure and accessible pedestrian sidewalks
- 2 Safe pedestrian and bikable connectivity at major intersections
- 3 Streetlights help provide a safe and secure environment for residents
- 4 Landscape helps soften the heaviness of concrete and asphalt and provides a pleasant buffer between the road and the sidewalks

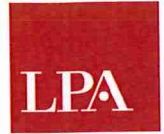




# CREATE CASTLE HILLS

## DETERMINING OUR FUTURE EXCELLENCE

A COMPREHENSIVE PLAN FOR THE CITY OF CASTLE HILLS

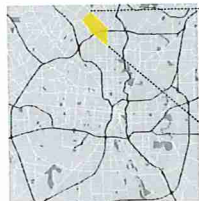


Example of a Physically Separated Sidewalk / Bike Lane

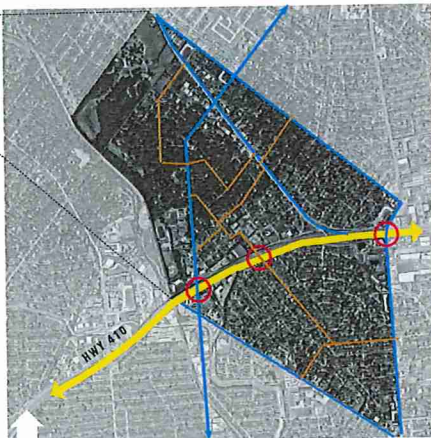
### INCREASE PEDESTRIAN MOBILITY ACROSS I-410



Revitalizing crossings at I-410 can dramatically increase pedestrian mobility and help connect the northern and southern neighborhoods.



**City of Castle Hills**  
The City of Castle Hills is a small community of 2.5 miles, incorporated in 1951. The city is located within metropolitan San Antonio, Texas.



## PEDESTRIAN MOBILITY

- Highway
- Large Corridor Roads (high traffic / volume)
- Proposed Small Road Collectors (moderate traffic / volume)
- Proposed I-410 Revitalized Connectors

Sidewalks provide many benefits including safety, mobility and healthier communities.

New sidewalks increase transportation options for people who may not be able to drive.

New sidewalks allow for better and safer pedestrian and motorist operations.

New sidewalks can provide increased connectivity between residential neighborhoods and major corridors and businesses.

Sidewalks help water runoff from eroding and damaging the soil.

Increase pedestrian mobility across Hwy 410

### MIXED TRAFFIC (RESIDENTIAL ROADS)



A mixed traffic yield roadway can be designed to serve pedestrians, bicyclists, and motor vehicle traffic in the same slow-speed travel area. Yield roadways serve bidirectional motor vehicle traffic without lane markings in the roadway travel area. These roads are appropriate on local residential roadways. Not for through motor vehicle travel.

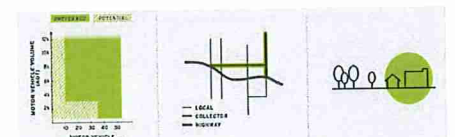
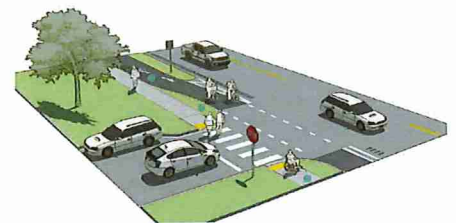
### MIXED TRAFFIC - VISUALLY SEPARATED



Sidewalks provide dedicated space intended for use by pedestrians that is safe, comfortable, and accessible to all. Sidewalks are physically separated from the roadway by a curb or unpaved buffer space.

Sidewalks are appropriate inside of built-up areas. May serve short distance travel between built up areas, e.g. along or near highways in rural areas near pedestrian-generating development, such as neighborhoods, schools, and businesses.

### MIXED TRAFFIC - PHYSICALLY SEPARATED



Physically separated sidewalks and bike lanes are appropriate on roads with moderate to high speed motor traffic vehicle that serve as primary connections to major roads across communities.

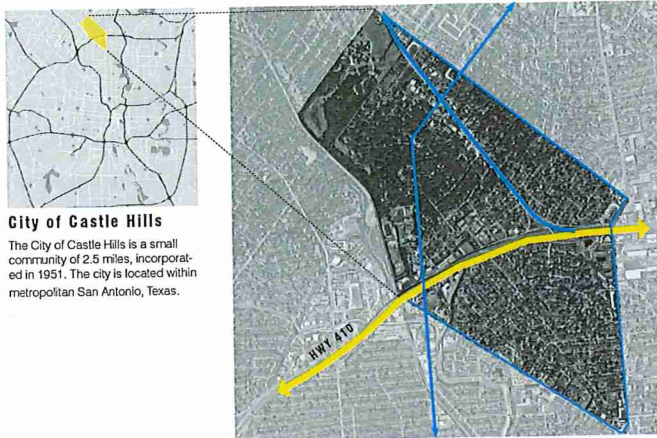
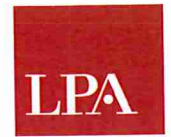
A separated bike lane is a facility for exclusive use by bicyclists that is located within or directly adjacent to the roadway and is physically separated from motor vehicle traffic with a vertical element creating a buffer between motor vehicle travel and pedestrians on sidewalks.



# CREATE CASTLE HILLS

## DETERMINING OUR FUTURE EXCELLENCE

A COMPREHENSIVE PLAN FOR THE CITY OF CASTLE HILLS



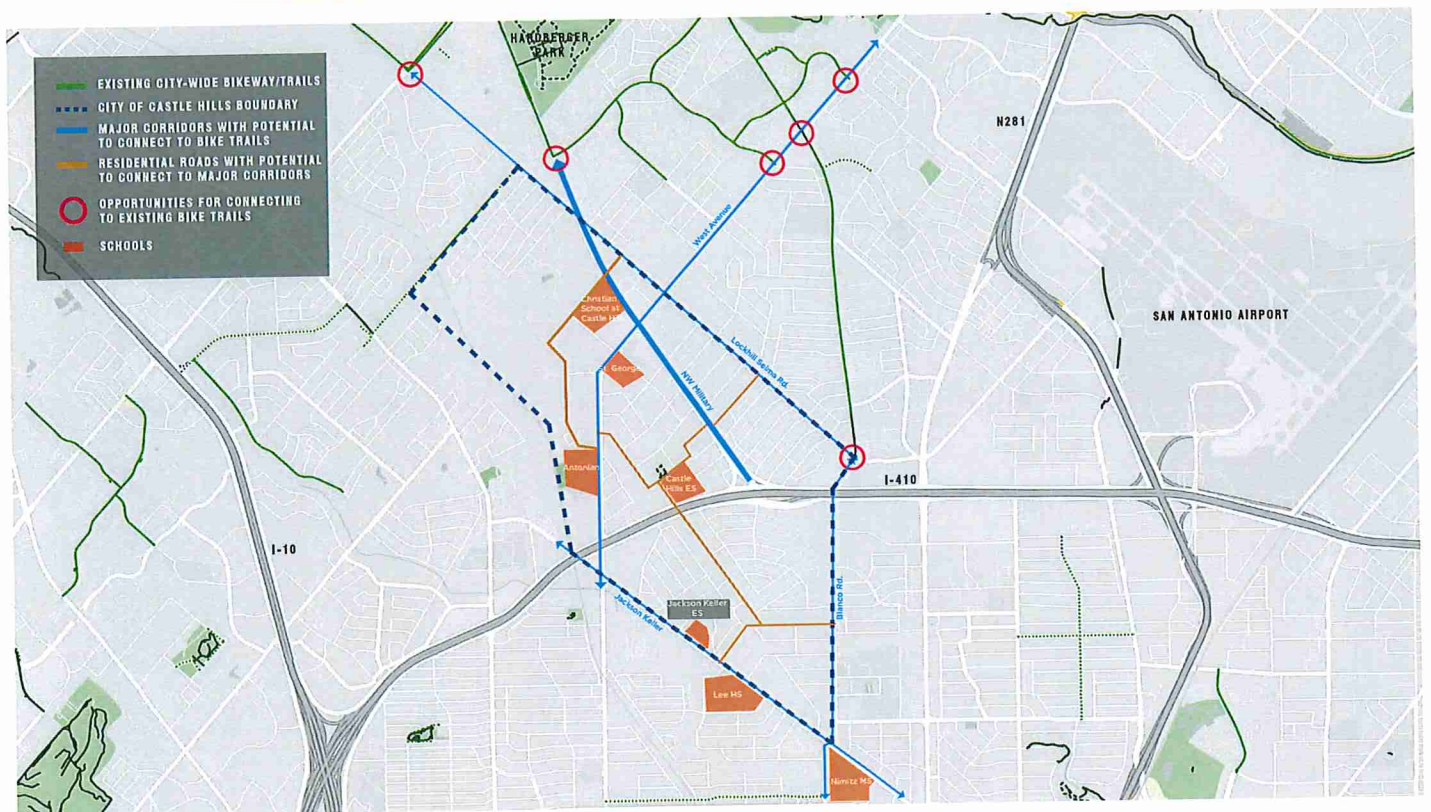
### City of Castle Hills

The City of Castle Hills is a small community of 2.5 miles, incorporated in 1951. The city is located within metropolitan San Antonio, Texas.

## BIKEWAY INFRASTRUCTURE

- Bicycle infrastructure is essential for supporting safe and more abundant bicycle use.
- Bicycle infrastructure can help create networks of well-lit, tree lined bike lanes of paths in major corridors of Castle Hills. Creating a safer and pleasant environment.
- Bicycle infrastructure can easily connect the city center to public transport and city bike-sharing.
- Bicycle infrastructure can also easily connect to the existing city-wide network of bike trails at Phil Harberger park.

MAJOR CORRIDORS CROSSING THROUGH THE CITY OF CASTLE HILLS. CURRENTLY, THERE IS NO BICYCLE INFRASTRUCTURE IN THE CITY LIMITS.



## FEATURES OF URBAN BIKEWAY INFRASTRUCTURE



BIKE LANES

Bike lanes enable bicyclists to ride at their preferred speed without interference from prevailing traffic conditions and facilitate predictable behavior and movements between bicyclists and motorists.

The configuration of a bike lane requires a thorough consideration of existing traffic levels and behaviors, adequate safety buffers to protect bicyclists from parked and moving vehicles.



BICYCLE SIGNALS

Bicycle signals and beacons facilitate bicyclist crossings of roadways. Bicycle signals make crossing intersections safer for bicyclists by clarifying when to enter an intersection and by restricting conflicting vehicle movements.



INTERSECTION TREATMENTS

Protected intersections create shorter, simpler crossings, more predictable movements, and better visibility between people on bikes and people driving. As a result, the intersection is more comfortable and safer for people using the bikeway and the crosswalk.



BIKEWAY SIGNING

Bikeway Signing and Marking encompasses any treatment or piece of infrastructure whose primary purpose is either to indicate the presence of a bicycle facility or to distinguish that facility for bicyclists, motorists, and pedestrians.

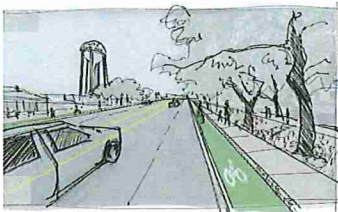
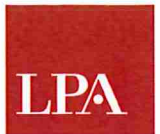
Markings must strive for a high level of visibility, instant identification, and take into account both motorist and bicyclist movements in relation to the marking placement.



# CREATE CASTLE HILLS

## DETERMINING OUR FUTURE EXCELLENCE

A COMPREHENSIVE PLAN FOR THE CITY OF CASTLE HILLS



- The NW Military corridor has the potential to become a complete street. A transportation and design approach that requires streets to enable safe, convenient and comfortable travel and access for users of all ages and abilities. Complete streets offer safe pedestrian infrastructure, dedicated bike lanes and safe traffic lanes for motorists.



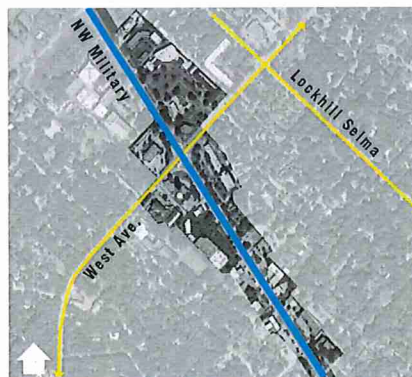
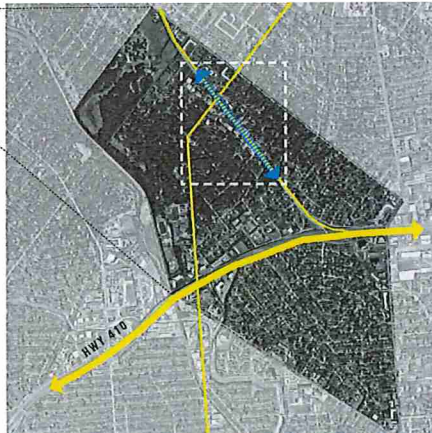
NW Military re-imagined

### NW MILITARY "MAIN STREET"



#### City of Castle Hills

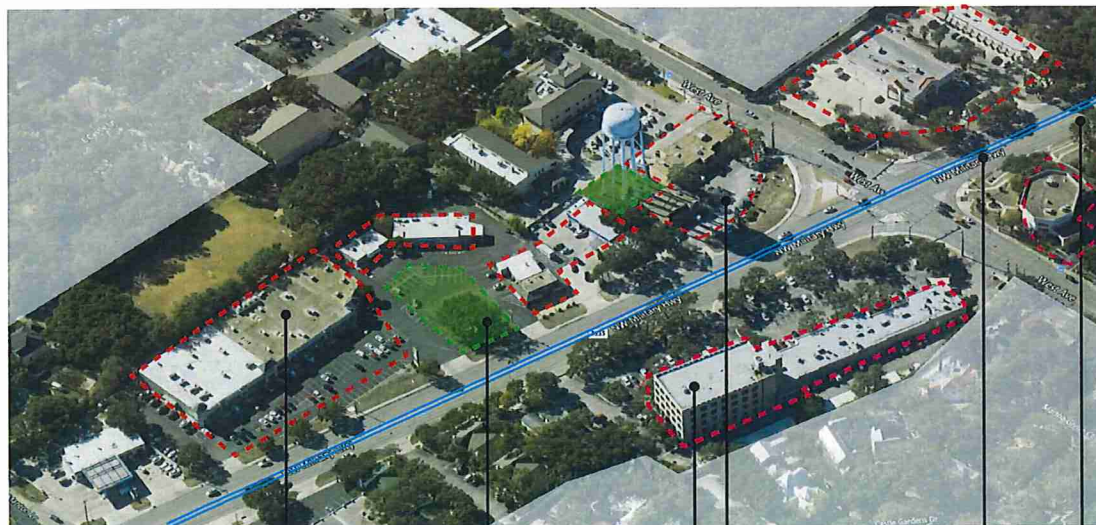
The City of Castle Hills is a small community of 2.5 miles, incorporated in 1951. The city is located within metropolitan San Antonio, Texas.



- The NW Military corridor has the potential to promote economic development by bringing in more diverse businesses

- The NW Military corridor also has the potential of being rezoned mixed use, which could attract commercial, residential and workplaces into the area.

- The NW Military corridor has the potential to become a complete street. A transportation and design approach that requires streets to enable safe, convenient and comfortable travel and access for users of all ages and abilities. Complete streets offer safe pedestrian infrastructure, dedicated bike lanes and safe traffic lanes for motorists.



#### REGIONAL COMMERCIAL NODE

A Regional Commercial Node at NW Military that concentrates large-scale commercial, residential, and workplace can serve as a catalyst for future investment and contribute to the overall image and identity of the city.

New development in this area could include retail, convenience, mixed use, multi-family, hotels and office space.

As part of the new regional commercial node, a section of NW Military can potentially become a complete street

#### COMPLETE STREET EXAMPLE

Mixed corridor businesses can also accommodate grocery stores, residential, workplace, childcare and small businesses.

Designate areas to serve as parks, green space, or trail connection. These areas are meant to enhance and preserve the environmental features of the city

Office and light industrial uses can help bring more small businesses and makers to the area

Commercial sectors that serve residents with convenient places to gather, eat and play

Complete streets that allow safe transit for pedestrians cyclists and motorists.

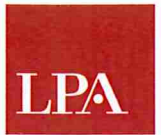
Bicycle lanes at NW Military corridor can connect to Phil Hardberger park and the network of city wide bike trails



# CREATE CASTLE HILLS

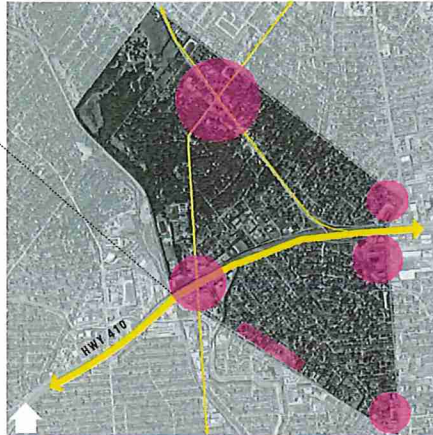
## DETERMINING OUR FUTURE EXCELLENCE

A COMPREHENSIVE PLAN FOR THE CITY OF CASTLE HILLS



### City of Castle Hills

The City of Castle Hills is a small community of 2.5 miles, incorporated in 1951. The city is located within metropolitan San Antonio, Texas.

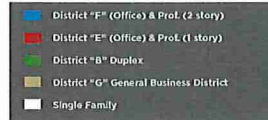


## ZONING & LAND DEVELOPMENT

### Zoning Opportunities

- Rezoning has the potential to promote economic development in underserved areas such as the southern cone.
- Rezoning can alleviate problems of housing shortages, particularly in a city like Castle Hills which is predominantly single family use zoned.
- Rezoning can promote more and diverse businesses and residents to move to Castle Hills.
- Rezoning should be done in a way that balances the scale between modernizing and displacing long time residents and marginalized communities.

### Current Zoning



### Zoning Opportunities



### REZONING



Rezoning means the current zoning map goes through an amendment process to change the base district classification of property that was previously zoned to a new zoning classification.

### TRANSITIONAL ZONING



Conceptually, think of transition areas as the space (not necessarily empty) between areas with single-family homes and areas with commercial buildings. In transition areas, the size and height of buildings generally get smaller as you move (or transition) away from commercial areas into neighborhood residential areas. Transition zones are the zoning categories assigned to parcels or lots in a transition area.

Transition areas can help address housing supply and manage traffic congestion as the City grows. They can provide diverse housing choices to serve more people in a wider range of income brackets. Transition areas are strategically located within an approximate five-minute walking distance to commercial goods and services, as well as major multimodal roadways (aka major corridors).