

# ***How Can ActivateSA Support Castle Hills?***



# Who We Are



San Antonio's volunteer-led tactical planning initiative and think tank advocating for new connected regional pedestrian and cyclist infrastructure.

**Formed in 2019** - Members include Architects, Landscape Architects, Conservationists, Civil Engineers, Civic Leaders, Transportation Planners

**ActivateSA seeks to become a unifying organization for active transportation planning and advocacy efforts across the San Antonio region**

# ***What We Advocate For***

## **Active Transportation:**

- Safe, Equitable, and Accessible Transportation Infrastructure
- Connected and Protected Bikeways
- Tree-Lined Sidewalks
- Expanded Greenway Trails

## **“Activating” San Antonio is All-Encompassing:**

- Social Mobility
- Resilient Neighborhoods
- Equitable Economic Development
- Public Transit
- Inclusive Land-Use Planning
- Affordable Housing
- Anti-displacement Protections

# ***What We've Done***



**Share the Streets** pilot projects on Cincinnati Avenue and West Cesar Chavez

**"Active Parkways"** to provide cycling and pedestrian connectivity within and between our 13 regional centers

Bexar County leg of the **Great Springs Project**

**Critical Expert Commentary** on multiple City of San Antonio proposed corridor improvements.

Host **regular meetings** to network among stakeholders and public officials and to facilitate intergovernmental collaboration.



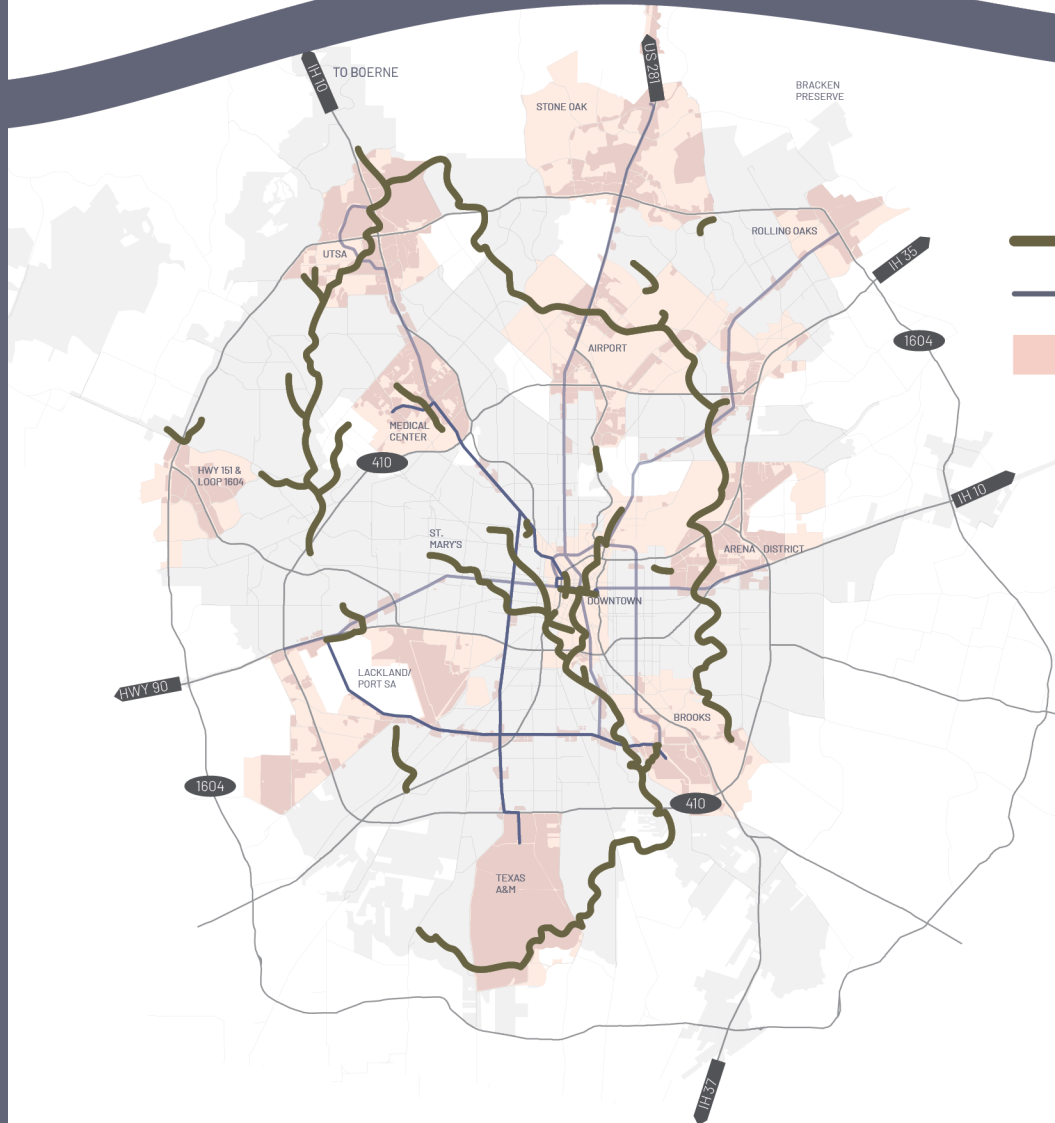
# Linear Greenway System



## EXISTING AND FUNDED LINEAR GREENWAYS

**138 MILES** of  
City of San Antonio,  
Bexar County,  
River Authority,  
and privately-built  
greenway trails,  
roadway improvements  
and Linear Parks

# Regional Centers & Connectivity

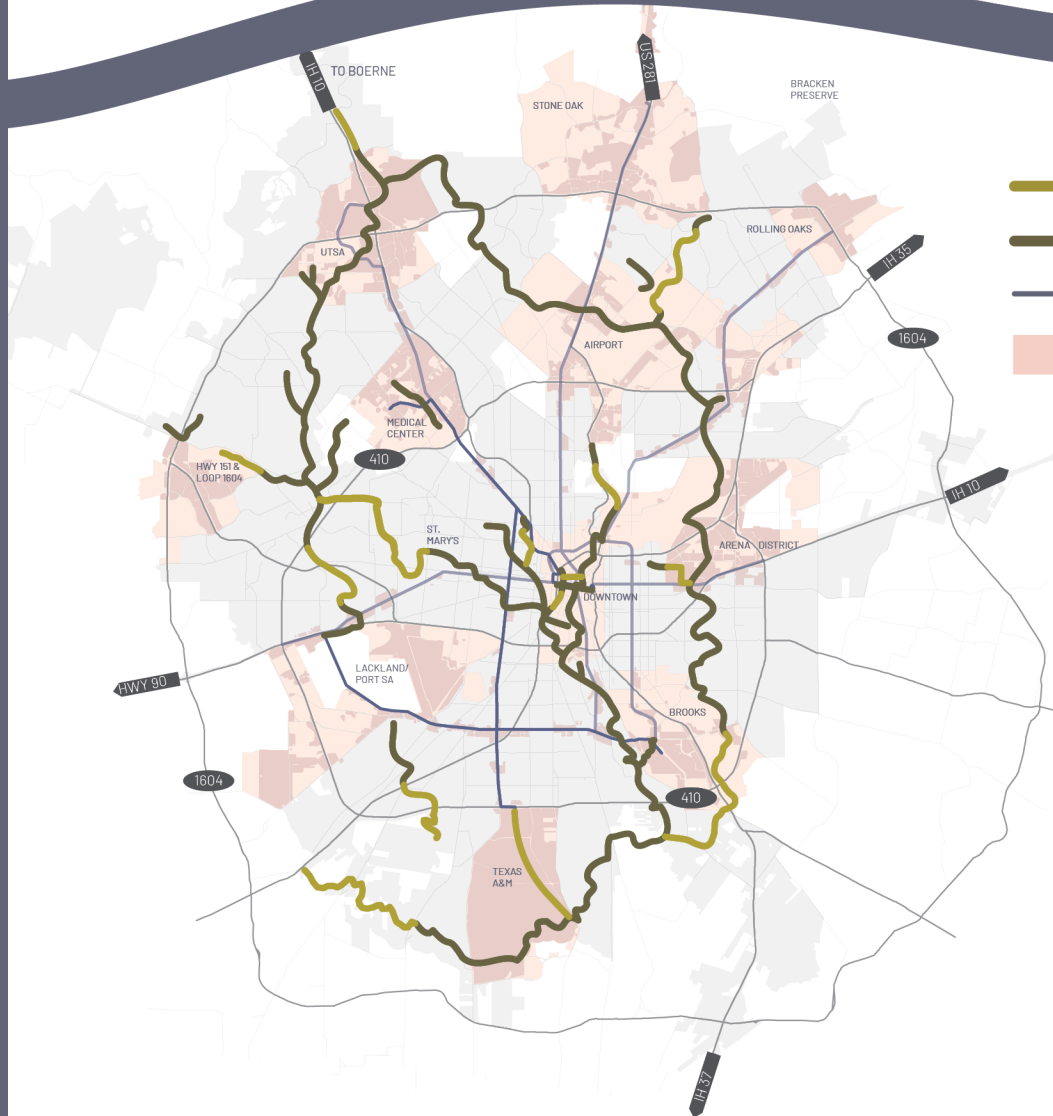


- EXISTING AND FUNDED LINEAR GREENWAYS
- VIA PRIMO AND PROPOSED RAPID TRANSIT ROUTES
- REGIONAL CENTERS

**LINKING 13 REGIONAL  
GROWTH CENTERS**

and  
**VIA'S PRIMO AND  
RAPID TRANSIT**

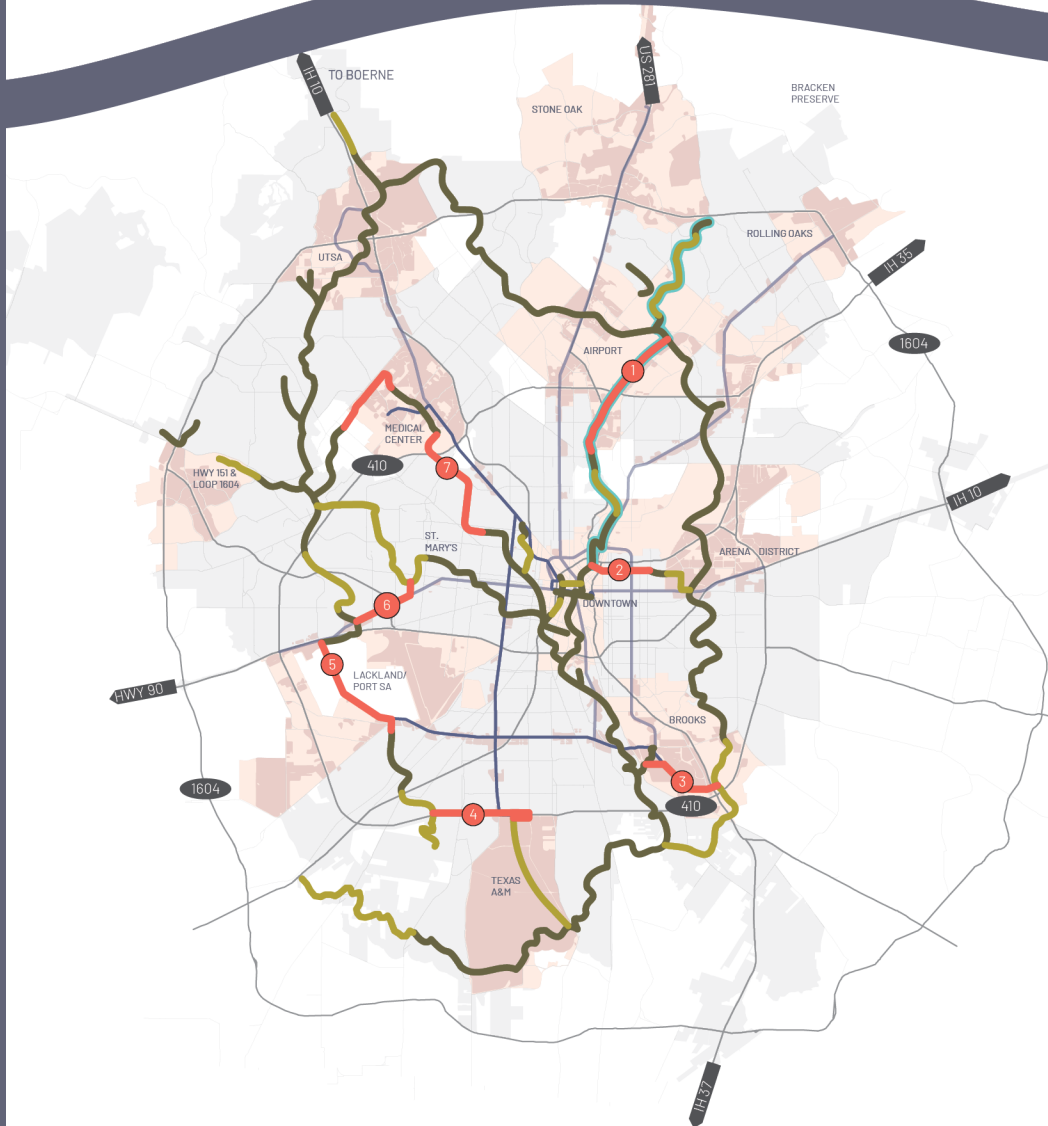
# City and County Proposed Projects



- COUNTY AND AAMPO POTENTIAL GREENWAYS
- EXISTING AND FUNDED LINEAR GREENWAYS
- VIA PRIMO AND PROPOSED RAPID TRANSIT ROUTES
- REGIONAL CENTERS

**60+ MILES** of new trails potentially funded by Bexar County and RAISE Grants.

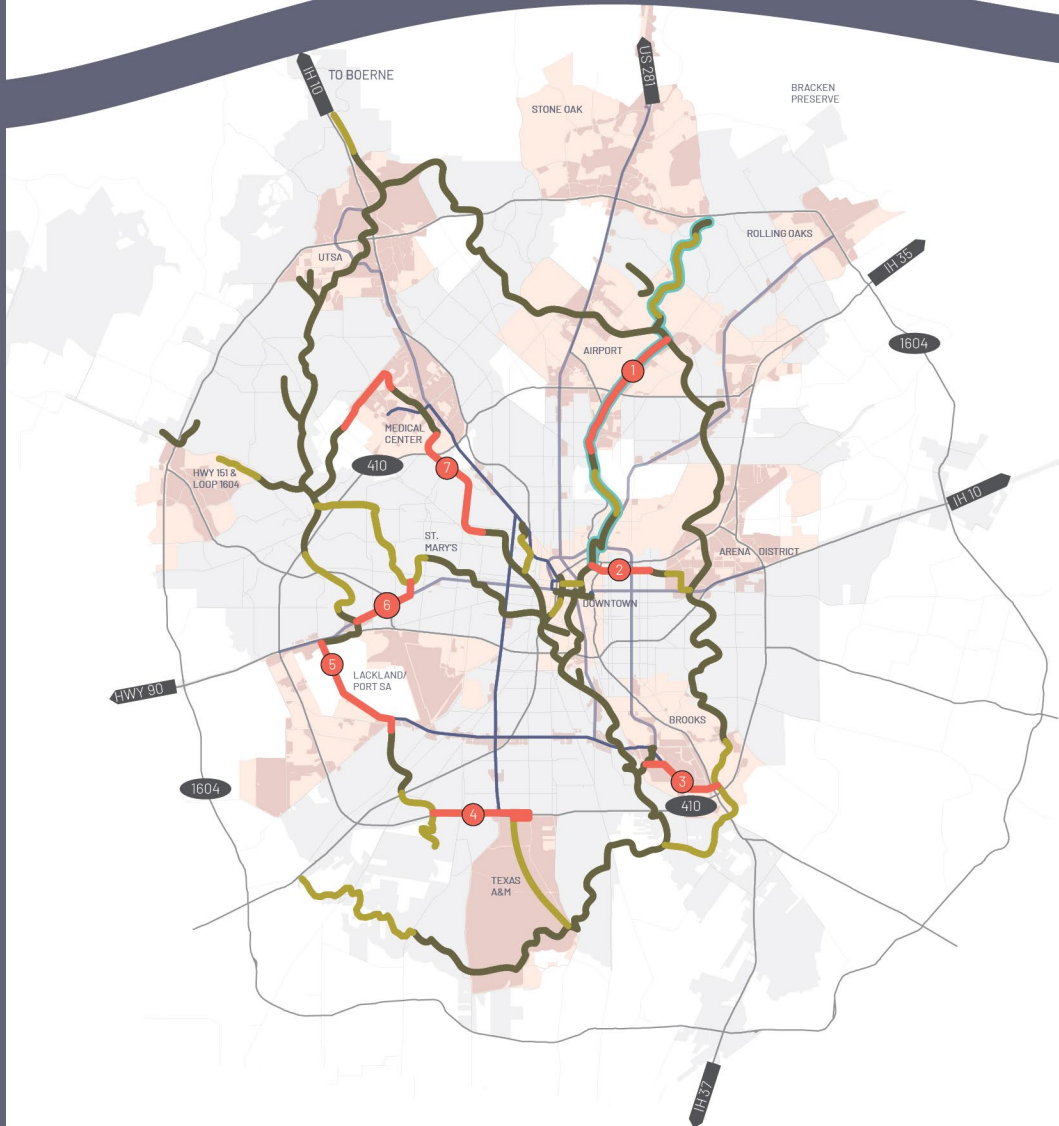
## Upcoming ActivateSA Projects



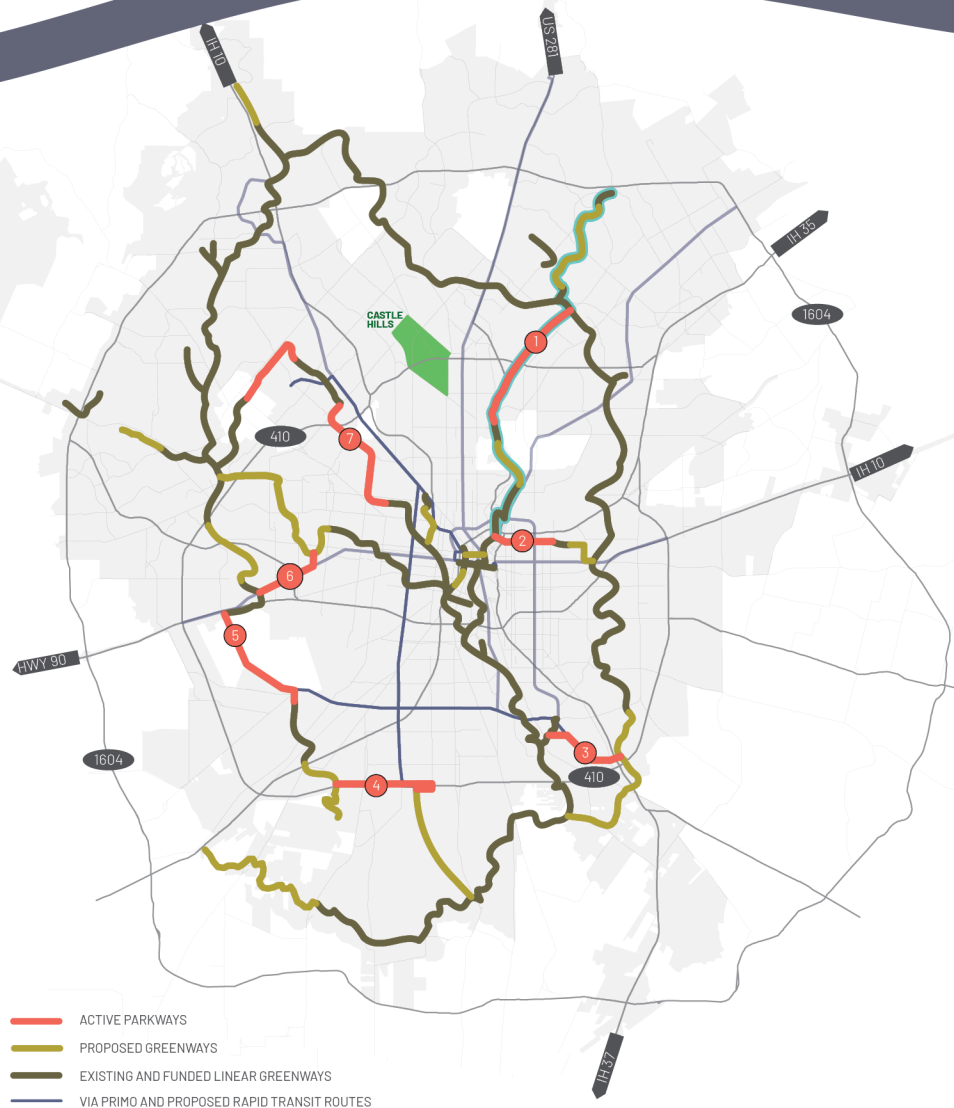
- 1 THE FLYWAY**  
Connecting Downtown, the Quarry, the Airport, and Salado Creek Greenway
- 2 SHERMAN**  
From Downtown to East Side cultural centers and Menger and Salado Creeks
- 3 BROOKS GREENLOOP**  
Connecting the SA River to Salado Creek through Brooks City Base
- 4 COLLEGE LINK**  
The final link in the Howard Peak Greenway from Leon Creek to Medina River
- 5 MILITARY**  
Lackland trail filling the “missing link” of the Leon Creek Greenway
- 6 ENRIQUE BARRERA PARKWAY**  
Connecting the Westside Creekways to Leon Creek
- 7 MEDICAL CENTER LOOP**  
Making San Antonio’s healing center a place that promotes healthy movement
- A GREAT SPRINGS PROJECT TRAIL UPGRADES**  
Miscellaneous upgrades and linkages on the Great Springs Project Trail Route



# Project Design



# Castle Hills Needs Connectivity



Castle Hills lacks connections to the 200+ miles of greenway trails and Active Parkways in the San Antonio Region - but there are opportunities for **BIKE AND PEDESTRIAN CONNECTIONS INSIDE AND OUTSIDE** Castle Hills on the horizon.



# Opportunities for Connectivity

## Low Speed Streets:

- City of San Antonio Program
- Connect Cyclists and Pedestrians with safe routes between centers without having to ride on major roadways.



CITY OF SAN ANTONIO  
TRANSPORTATION  
DEPARTMENT



## Safe Routes to School:

- Federal Program
- Make walking and cycling safer and easier for students to promote health and ease congestion around schools



# ***Roadways Divide Castle Hills***



Right now, major arterial roadways like NW Military, and Blanco separate Castle Hills from itself and San Antonio. **LOOP 410 ALONE OCCUPIES 63 ACRES OF CASTLE HILLS.**



# Dividing Schools



There is no safe and comfortable way for many students at Castle Hills Elementary to access the school across Loop 410, West, and Northwest Military.

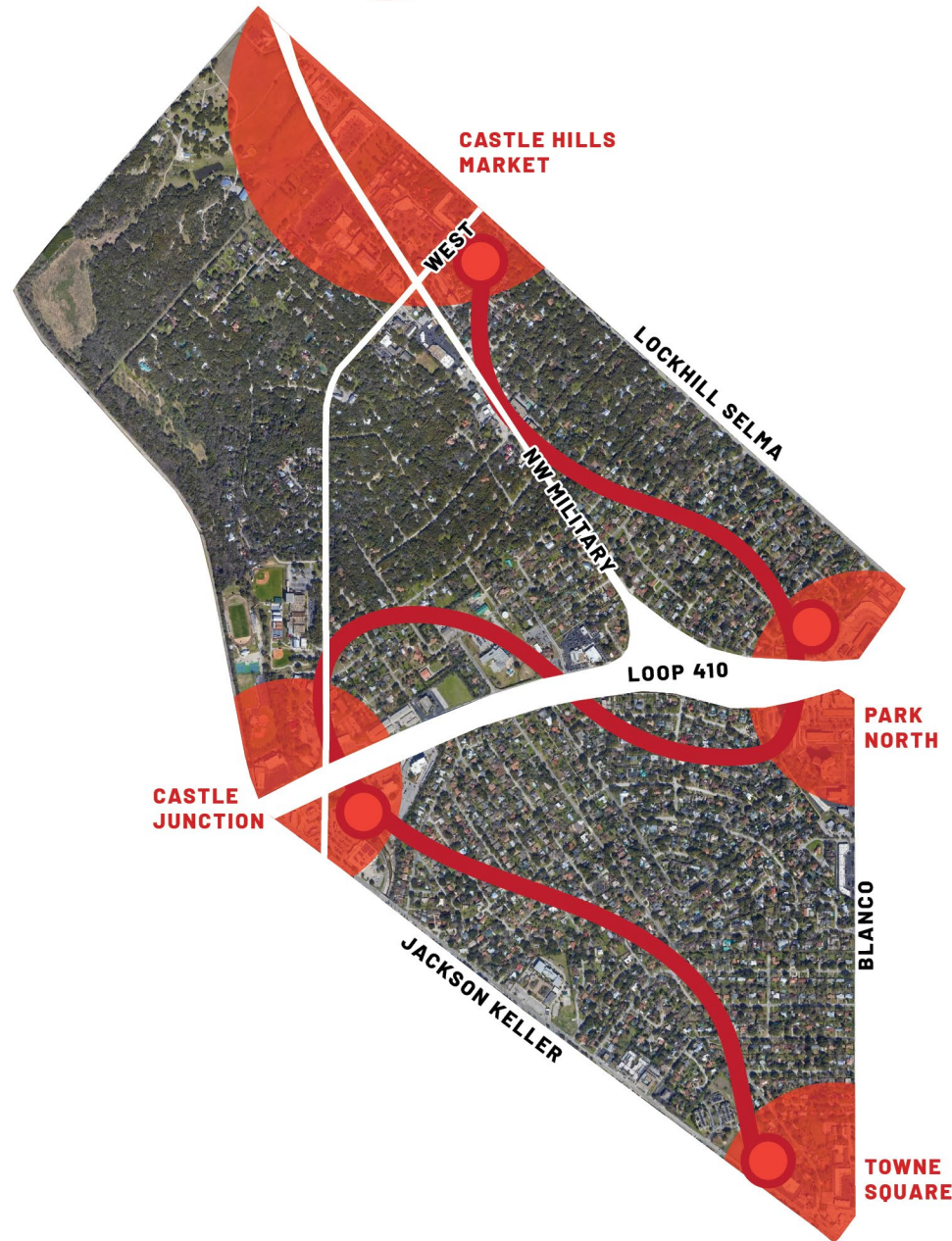
# Dividing Churches



Nor is there a safe way for people of faith to access the wealth of churches that Castle Hills hosts on foot or by bike. Roadways are dividing these community anchors from each other.



# Dividing Commercial Centers



The Shopping Centers on the edges of Castle Hills are also disconnected from one another, with no safe way for shoppers to go from Castle Hills Market to Park North without biking or walking on dangerous roads.



# Castle Hills Can Connect Them



**SOMETIMES CONNECTIONS  
REQUIRE BUILT  
IMPROVEMENTS, LIKE AT  
HONEYSUCKLE AND 410 -**





# Castle Hills Can Connect Them



**IN OTHER CASES, SIGNS, WALKS, RIDES, AND GUIDES CAN MAKE EVERYONE FEEL SAFE WALKING AND BIKING.**

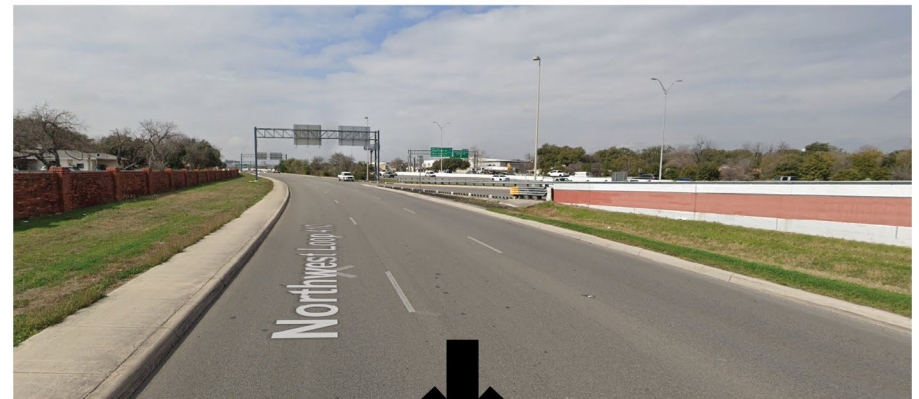




# Ask More of Your Access Roads

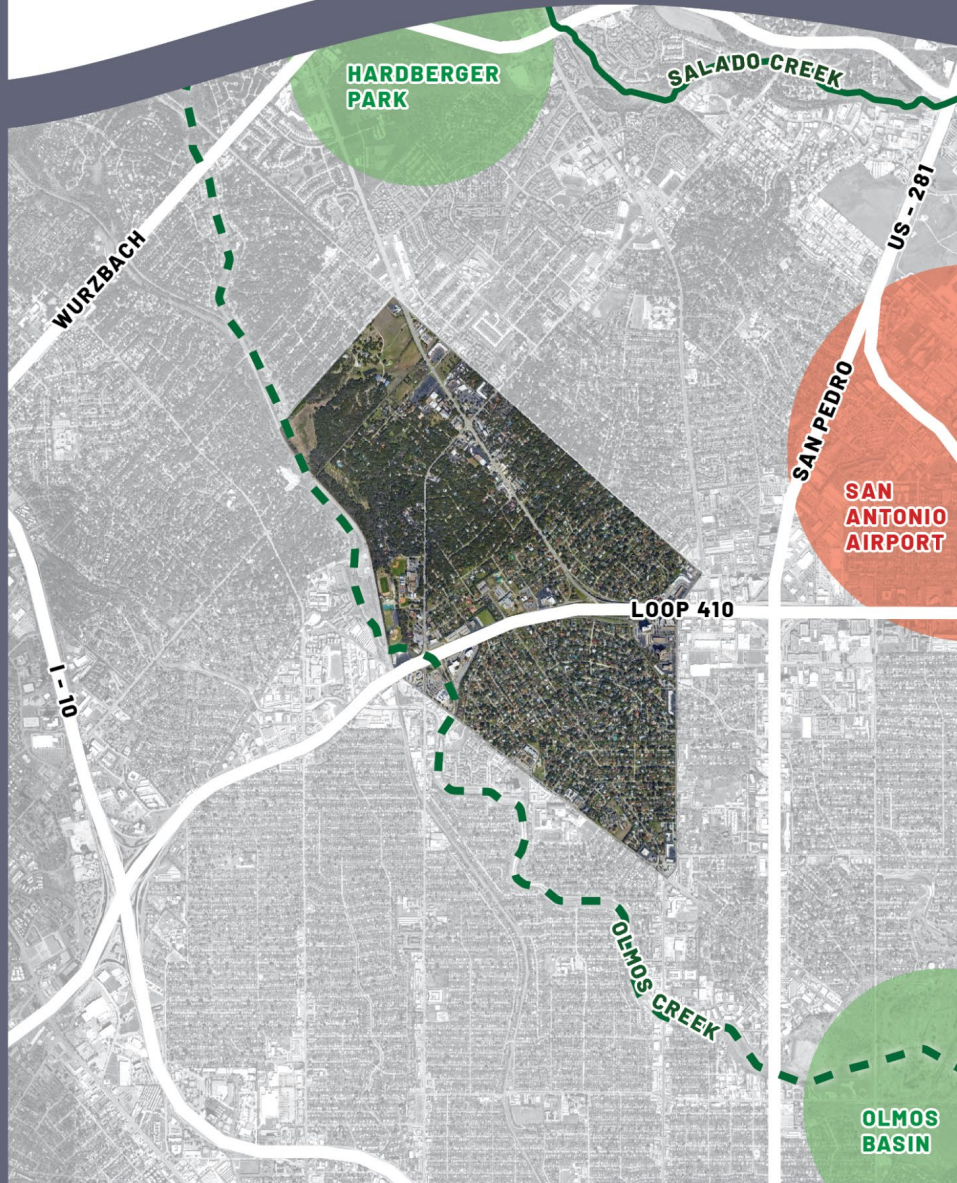


**CONNECTING TO THIS  
ROUTE, ACCESS ROADS  
CAN BE REDESIGNED TO  
ACCOMMODATE CYCLING**





# Get Ready for New Greenways!



With the success of the Howard Peak Greenway System, Olmos Creek extending out of the Olmos Basin may soon be developed into a greenway connector to Hardberger Park – **CASTLE HILLS SHOULD ADVOCATE FOR SUCH A CONNECTION.**



# ***Thank You!***

# ***Questions?***

**David Bemporad**

[contact@activatesa.org](mailto:contact@activatesa.org)

